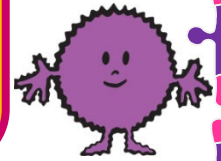
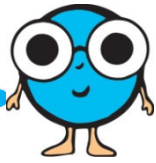


Celebrate National Autism Awareness Month with Us – The Sensory Gang!



Tips for the Week of April 14th

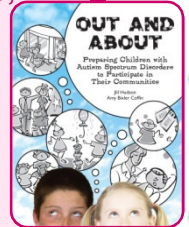
A Tip for Parents

Grocery Shopping ...

Make a visual grocery list with your child to take to the grocery store. Make sure to include pictures of a few foods that your child prefers. Alternate preferred items with other items to be purchased, saving a favorite item for the end of the list. By doing so, you are encouraging the child to shop with you for all items on the list in order to get that most desired item at the end.

- Amy Bixler Coffin

Find other tips for creating successful community outings in *Out and About: Preparing Children with Autism Spectrum Disorders to Participate in Their Communities* by Jill Hudson and Amy Bixler Coffin. This book is 25% off during Autism Awareness Month.



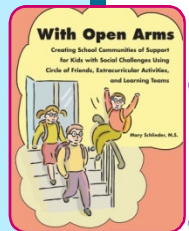
A Tip for Professionals

Lunch Time ...

Create visual reminders on a small card to remind the child what is appropriate and what is not appropriate behavior in the lunchroom. Reminders like hands to self, inside voice, my lunch only, walking feet, no throwing food, only throw away trash, no sharing food, etc., can go a long way toward making lunch a positive experience. Review the rules with the student before she joins her Lunch Bunch.

- Teresa Cardon

For information about creating a successful Lunch Bunch and other social groups, read *With Open Arms: Creating School Communities of Support for Kids with Social Challenges Using Circles of Friends, Extracurricular Activities and Learning Teams* by Mary Schlieder. This book is 25% off during Autism Awareness Month.



A Tip for Adults on the Spectrum

If you like to come up with ideas, find someone you trust to help you follow through with bringing the ideas to fruition. They may be innovative and creative and end up making a difference.

- Mark Naines (adult on the spectrum) and Leslie Blasco (spouse and parent of loved ones on the spectrum)

Autism Asperger Publishing Company • 1-877-277-8254
P.O. Box 23173, Shawnee Mission, KS 66283 • www.asperger.net

